

Unlock The Value  
Of Your Business Process



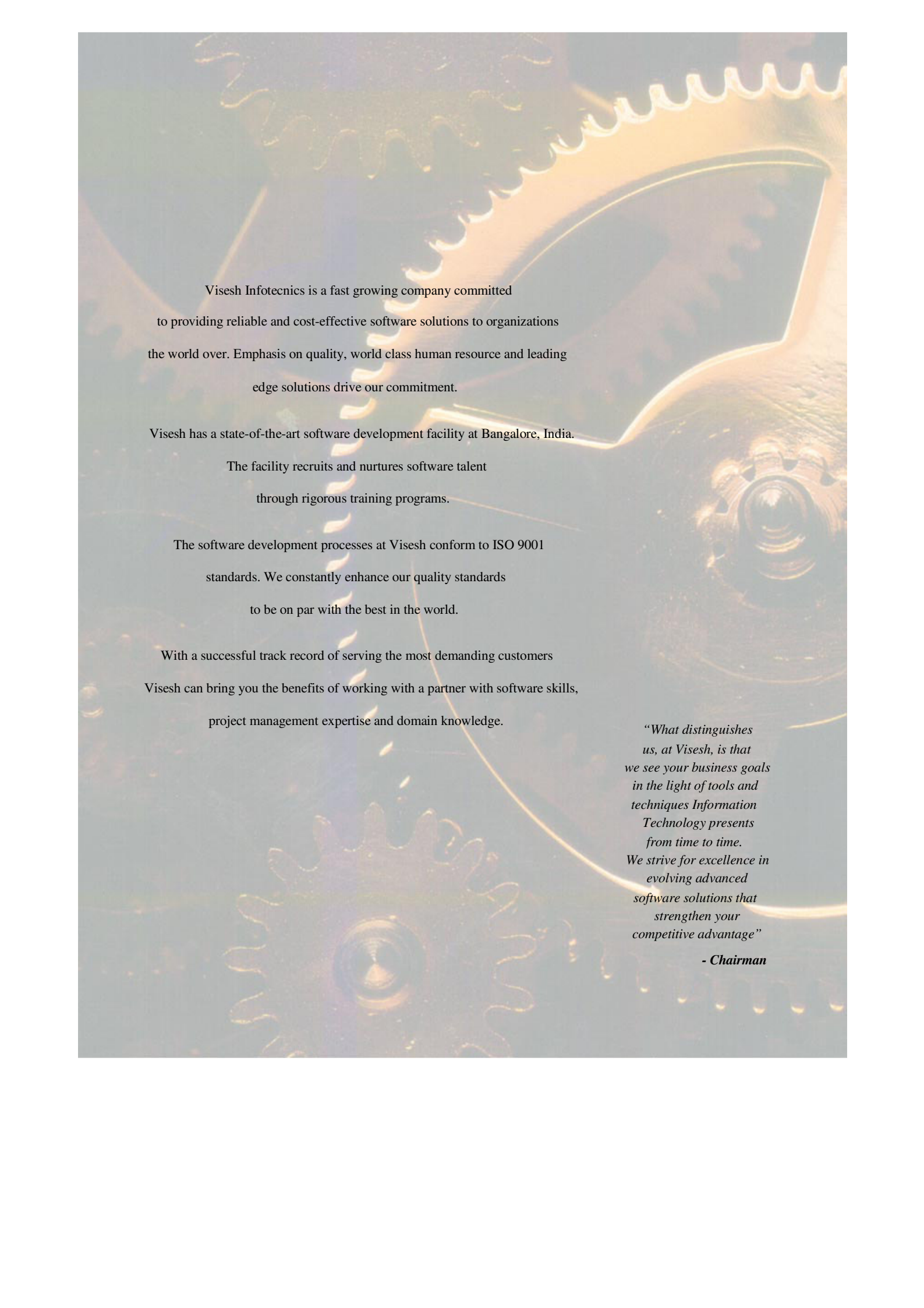
**BusinessPro**

**Complete Enterprise Solutions**



**VIRESH INFOTECNICS LTD.**

An ISO 9001:2000 Company



Visesh Infotecnic is a fast growing company committed to providing reliable and cost-effective software solutions to organizations the world over. Emphasis on quality, world class human resource and leading edge solutions drive our commitment.

Visesh has a state-of-the-art software development facility at Bangalore, India.

The facility recruits and nurtures software talent through rigorous training programs.

The software development processes at Visesh conform to ISO 9001 standards. We constantly enhance our quality standards to be on par with the best in the world.

With a successful track record of serving the most demanding customers Visesh can bring you the benefits of working with a partner with software skills, project management expertise and domain knowledge.

*“What distinguishes us, at Visesh, is that we see your business goals in the light of tools and techniques Information Technology presents from time to time. We strive for excellence in evolving advanced software solutions that strengthen your competitive advantage”*

*- Chairman*

BusinessPro is widely deployed among discrete manufacturing companies, auto ancillaries. Rich in functionality, BusinessPro is powered by Oracle Developer 2000 at front-end and Oracle 8i at the back end.

Visesh **BusinessPro™** applies the power of information technology to your business issues

- 1 To drive your business processes with greater efficiency, accuracy and predictability
- 1 To maintain your competitive edge
- 1 To realize the full potential of your enterprise's capabilities.

And unlock the real value of your business processes.

Visesh **BusinessPro™** builds on the winning parameters of your processes and the best industry practices.

Visesh **BusinessPro™** is implemented by Visesh professionals who work with you closely, like a part of your team, with expertise spanning industry segments, technologies and development tools.



Visesh **BusinessPro™** automates critical functions of your organization. With **BusinessPro™**, organizations of all sizes can deploy enterprise wide applications that are modular, scalable and reliable. It makes data available across the enterprise to enable better decisions, faster.

Visesh **BusinessPro™** enables better return on investment through cost-effective and faster deployment capability. It can be deployed progressively based upon organizational suitability. **BusinessPro™** - a result of more than 300 man years of effort, is a time tested and proven solution across a variety of businesses, in India and the world over.

### **BusinessPro™**

**Financials**

**Sales & Distribution**

**Excise**

**Fixed Assets**

**Engineering**

**Materials**

**Production Planning and Control**

**Production**

**Plant Maintenance**

**Quality**

**HRMS**





# Financials

## General Ledger

- 1 User defined accounting periods
- 1 Up to 99 Accounting periods
- 1 Flexible Account codes with dual coding facility
- 1 Unlimited day books
- 1 Online allocation and matching of debits & credits
- 1 Multi Company books with options of consolidation
- 1 User defined Income and Balance sheets
- 1 Department & Divisional accounting & budgeting
- 1 Cost center expense tracking / reporting
- 1 Transaction details maintained online for several years until clear down
- 1 Weekly or monthly P&L and Balance sheets, daily cash / bank statements
- 1 Powerful online query facilities by transaction analysis code and range of amounts
- 1 Rapid data entry with automatic posting facilities
- 1 Voucher printing option
- 1 Multiple currency management
- 1 Bank Reconciliation statements

## Financial Analysis

- 1 Trial Balance
- 1 Bank / Cheque reports
- 1 Extensive ledger reports
- 1 Unlimited financial statement analysis
- 1 Check list of un posted transaction

- 1 Ageing reports
  - 1 Budget vs. Actual comparison
- ### Accounts Receivable
- 1 Customer master file with address, discount, credit limit etc
  - 1 Receivable entries interfaced from sales orders / Invoices
  - 1 Allows partial or full payment of account of agent specific invoices
  - 1 Credit / Debit allocation system
  - 1 User defined receivables ageing report
  - 1 Online display of credit limit checking
  - 1 Sales & receivable analysis by group of Customers
  - 1 Customer payment history credit

## General Invoicing

- 1 Free format invoice generation
- 1 Automatic posting to Account Receivable
- 1 Multiple user defined calculations in invoice

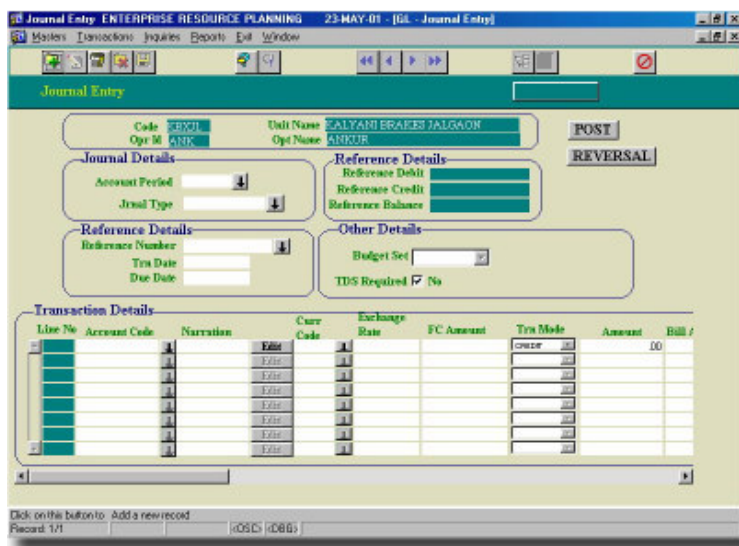
- 1 User defined day book formats

## Accounts Payable

- 1 Master file with Vendor names, addresses, discounts etc.
- 1 Payable disbursements, adjustments and credits
- 1 Payables cross referenced to invoice ID to PO(Voucher system)
- 1 Allows partial and full payment
- 1 Automatic discount calculation, terms, credit limit
- 1 Multiple payment periods
- 1 Disbursement of multiple GL Accounts
- 1 Schedule recurring payments
- 1 Manual or Automatic allocation
- 1 Adjustments & Credit handling

## Printing Tracking of Cheques

- 1 Automatic or Manual Cheque writing
- 1 Multiple Bank Account maintenance & reconciliation





# Sales & Distribution

BusinessPro™ Marketing is a comprehensive sales and Distribution management Solution that unlocks the value of your Marketing processes by significantly enhancing the productivity of your sales ordering, distribution and invoicing functions. BusinessPro Marketing manages preparation of Quotation, Sales Orders, Invoices and Tracking. These capabilities ensure responsive customer service and order processing efficiency. Integration with the Accounts Receivable system fully automates the customer credit and collection process. The system also integrates customer order processing into the Master production schedule and the entire manufacturing/ distribution or trading system.

## Sales Ordering

- 1 Enquiry

- 1 Quotation generation

- 1 Order acceptance
- 1 Order processing

## Distribution & Invoicing

- 1 Unlimited items and Sales Orders

- 1 Multi Currency support

- 1 Separate due dates for each Item on Sales Order

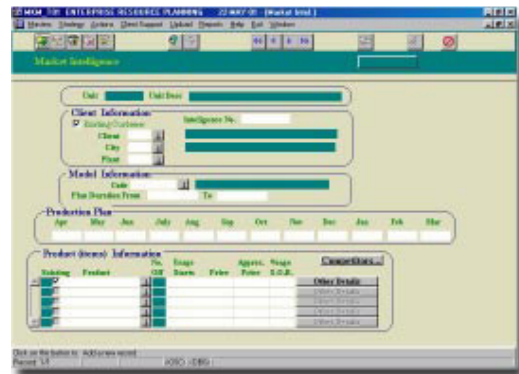
- 1 Blanket Sales Orders

- 1 Customer Bill To, Ship To and Tax look up table

- 1 Quantity discounts, Volume discounts

- 1 Complete or partial shipment with separate invoices

- 1 Excise Accounting



- 1 Firm Orders, Forecast Orders, Variance reporting

- 1 Comprehensive sales analysis at macro and micro levels (line level analysis of sales)

- 1 line Item Discounts

- 1 Matrix Pricing - Multiple Price Lists, multiple discount levels

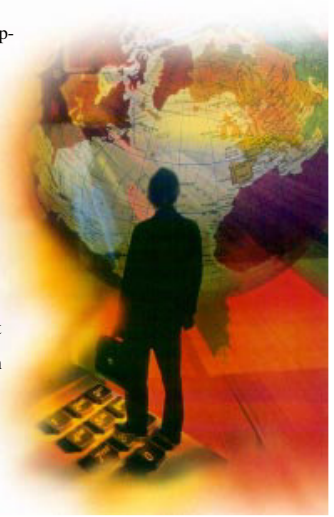
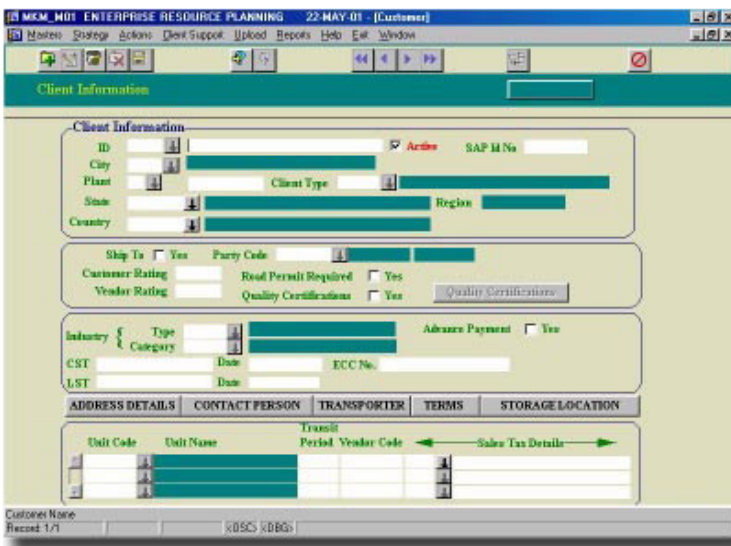
- 1 Handling of free items, sample and promotional schemes

- 1 Prompts for substitutes for non-stock items

- 1 Multiple Serial Numbering for different types of Sales Documents

- 1 Partial shipment process and Release option for future Posting

- 1 Document generation





# Excise

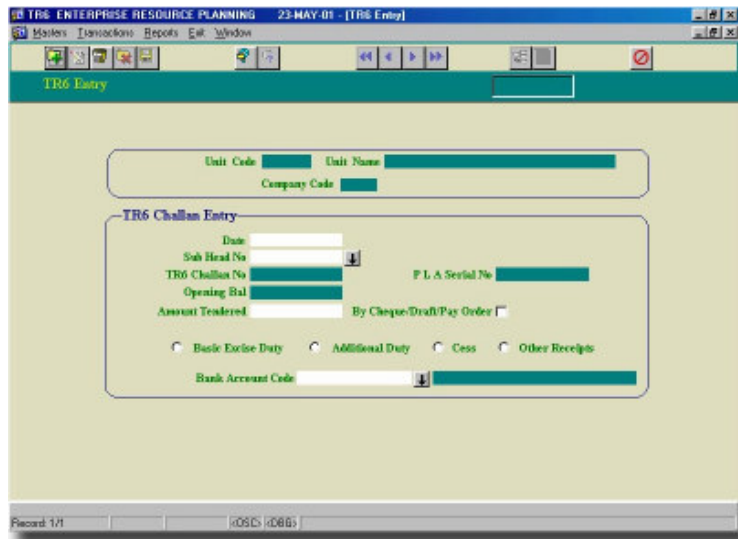
BusinessPro™ excise module enables comprehensive solution that unlocks the value of excise related processes. BusinessPro™ excise module is on-line with other business modules like purchase, sales, inventory and production.

Finance is linked with the excise module in a cohesive manner.

The excise module shares the various resources (masters, transactions) from other modules and prepares the various statutory reports.

### Purchase & Receive

- 1 Vendor, item excisable
- 1 Cenvat
- 1 Excise subchapter, sub head
- 1 RG 23 A Part I/II
- 1 RG 23 C Part I/II



- 1 57 F4 challan entry
- 1 Sales and Invoicing
- 1 Invoice excise details
- 1 Excise Returns
- 1 173 H
- 1 57 F4

- 1 Invoice cancellation

### Production

- 1 RGI bond entry
- 1 Fixed asset creation
- 1 TR6 challan entry
- 1 PLA Register
- 1 RT 12 Register
- 1 Manual and automatic entry in RG 23 A/C I/II register, RGI register

- 1 Statutory reports

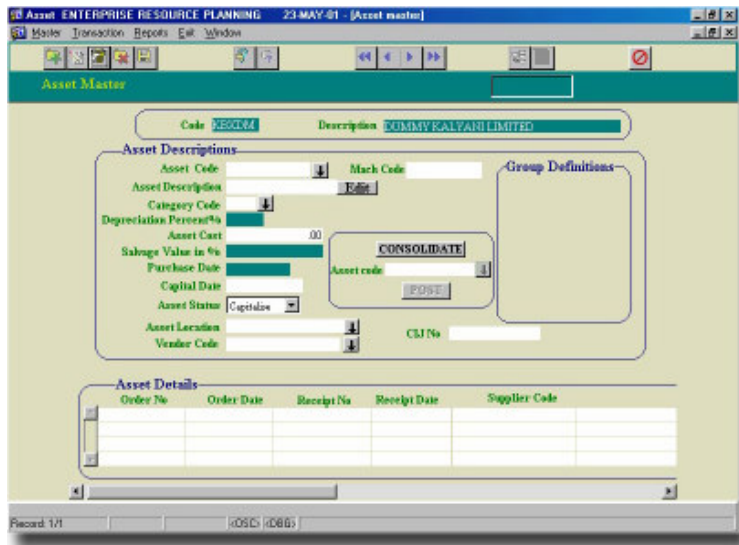




# Fixed Assets

Fixed Asset Accounting enables effective asset management by tracking asset acquisitions, asset transfers and revaluations. It monitors insurance, hire purchase and lease payments. It also simulates depreciation and allows retractive depreciation and allows retractive change of depreciation.

- 1 Unlimited user defined Act code like Companies Act
- 1 Features of Analysis Groups definitions & codes
- 1 Unlimited user defined Classification codes with percentage for various Depreciation
- 1 Availability of various masters reports
- 1 User defined unlimited Accounting periods
- 1 Category codes Depreciation and



finance module Interface

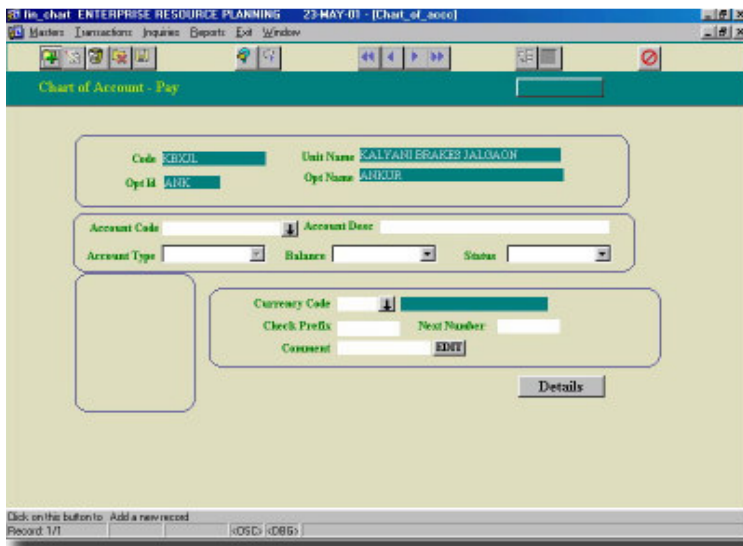
- 1 Features of manual assets creation
- 1 Generating Assets from Business modules by Sales/Purchase
- 1 Status of Assets (Capitalization, Non Capitalization, Revaluated,

Consolidation, Expired Assets, Sold or Disposed)

- 1 Availability of Shift master for various assets
- 1 Depreciation Method SLM/WDV.
- 1 Revaluation for low level Depreciated assets

## Special Reports

- 1 Asset Register Report
- 1 Depreciation Statement Report
- 1 Act Report
- 1 Asset report by Category wise / Disposable wise

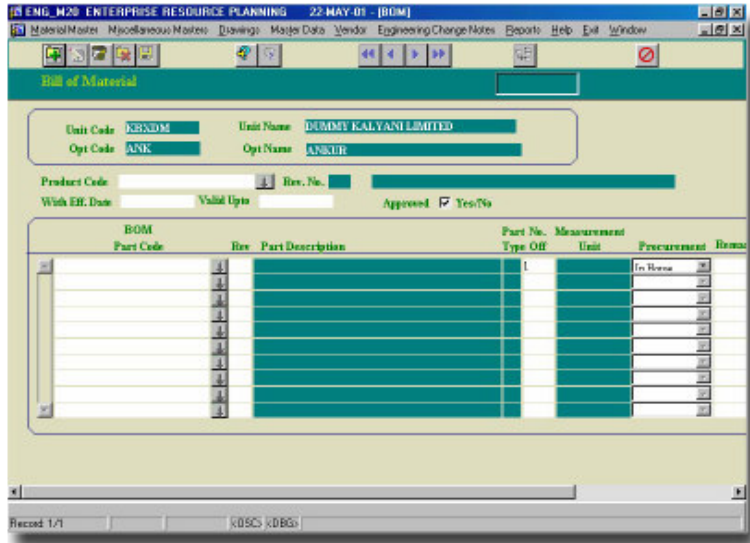




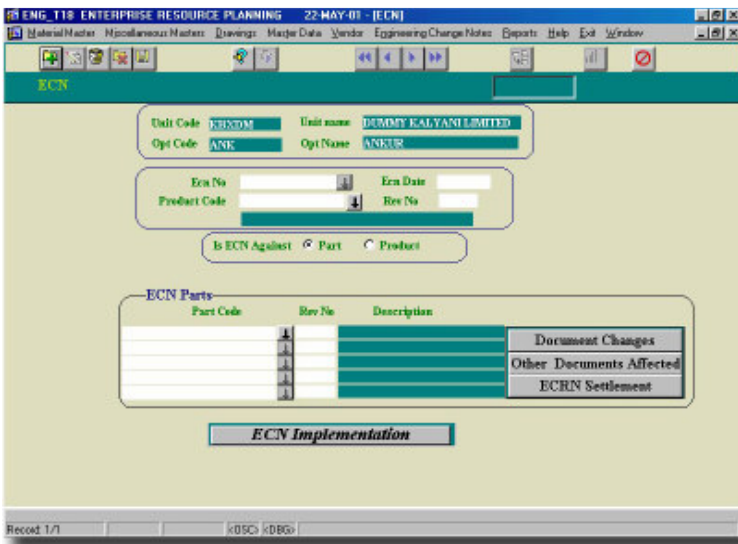
# Engineering

BusinessPro™ Engineering enables faster turnarounds in product and process engineering through efficient change management and vendor management and effective cost controls.

- 1 Product Master
- 1 Part Master
- 1 Item Master
- 1 Unit of Measurement
- 1 Process Master
- 1 Location Master
- 1 Work Center Master
- 1 Instrument & Gauge Category Master
- 1 Instruments
- 1 Guages
- 1 Machine Master
- 1 Tool & Die Master
- 1 Jigs & Fixture Master



- 1 Accessories Master
- 1 Drawing Category
- 1 Drawings
- 1 Samples
- 1 Bill of Material
- 1 Cost Card
- 1 Process Sheets
- 1 Product Feasibility Sheet
- 1 Vendor Master
- 1 Check List for change notices
- 1 Reasons/Actions for change notices
- 1 ECRN
- 1 ECRN





# Materials

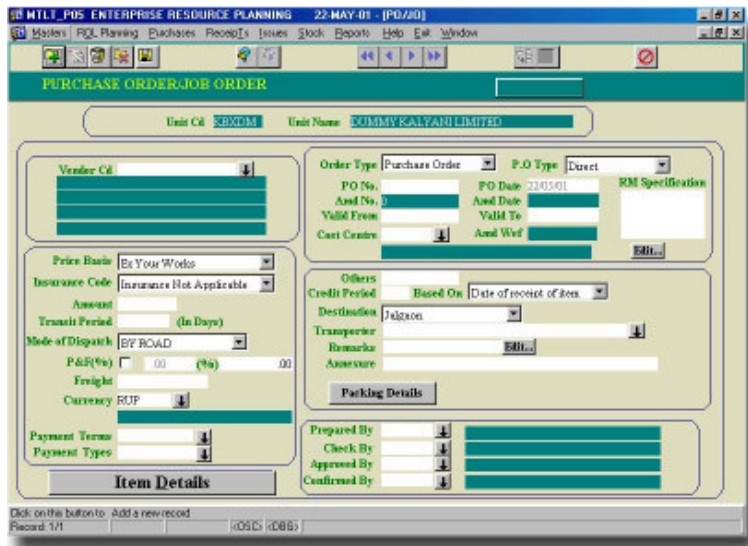
BusinessPro™ Materials Management is a comprehensive solution that unlocks the value of your purchase, material requirement planning and inventory control processes through better controls on receipt management and storage movement and better analysis of stocks

## PURCHASE MANAGEMENT

BusinessPro™ Purchase system manages all purchasing activities for requisition through receipt. The system provides control, access to shared information and integration with MRP and financials. The module includes requisition, subcontract management and supports MODVAT/VAT, multi currency and other local requirements. It supports unlimited types of Purchase Orders

### Purchase Requisitions & Orders

- 1 Purchase requisition sub system



(Purchase indent)

- 1 Vendor part number & Account number entry
- 1 PO release process
- 1 Subcontract management
- 1 Unlimited types of Pos

1 Calculation of CENVAT excise

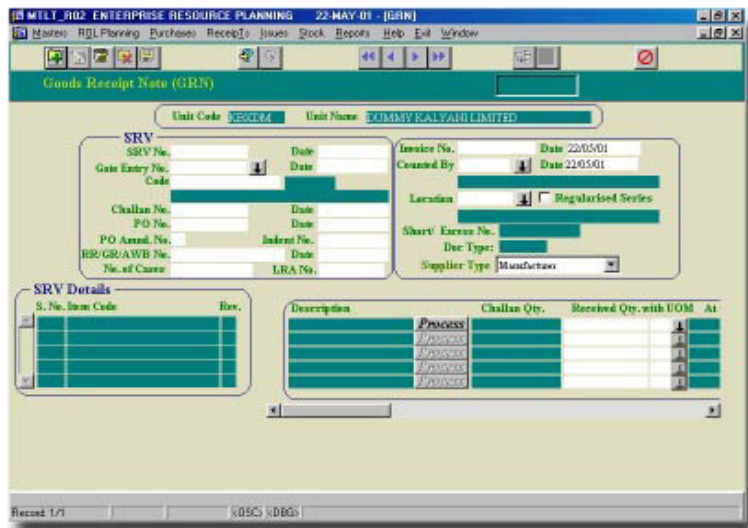
- 1 Freight tables
- 1 Due, expedite & schedule receipt date information
- 1 Automatic posting of receipt of inventory (perpetual inventory)
- 1 PO closeout & Purchase rate variance analysis
- 1 Multiple price break item information
- 1 Support for partial deliveries
- 1 Support & integration of GRNs
- 1 Provision for delayed value entries for goods received
- 1 Stock issue valuation
- 1 Management of multiple stages of purchase
- 1 Vendor analysis
- 1 Inspection store management



## MATERIALS REQUIREMENT PLANNING (MRP)

BusinessPro™ MRP informs the manager on convenient terms all information that is required to make realistic and balanced production plans. It helps measure progress in meeting the plans, highlights significant deviations to initiate timely corrective action or develop alternative course of action.

- 1 Comprehensive BOM system with multilevel explosions
- 1 Generates procurement plans based on requirement
- 1 Recommends direct purchase, shop floor or Sub-contract job orders for Production plan considering stock on hand & pending Purchase orders
- 1 Reports like dead stock material not required for current production plan considering stock on hand & pending Purchase orders
- 1 Effective Purchase Management System comprising system recommended Purchase



- orders, automatic rate checks, rate contracts & follow up reports fully integrated with receipt accounting system
  - 1 Shop floor & Subcontract management monitors work orders, material consumption & Scrap receipts. Informs WIP at shop floor & Sub-contractor stocks on-line
  - 1 Scrap accounting for scrap / waste monitoring purposes
  - 1 Prompts substitute material during run time in case of stock constraints & recommends purchase orders
  - 1 Updates conversion charges of shop floor & Sub contractors
  - 1 Automatic stop updation of raw material at shop floor & finished goods at stores, using BOM
  - 1 Flexible job costing, budgets & variance monitoring
  - 1 Production batch controls with expiry date
  - 1 Fully integrated with costing & Financial accounting, Sales & Order processing, Invoicing & MIS
  - 1 Material transfer transaction Logging & Reporting
  - 1 User defined commodity codes
  - 1 Special Inspection store management of multiple stages of purchase
  - 1 Receipt audit trails
  - 1 Material return notes for rejected deliveries
  - 1 Vendor performance analysis (via Pos)
- Control & Analysis**
- 1 FSN stock analysis
  - 1 ABC & XYZ analysis
  - 1 Surrogate Quantity Management, Batch Expiration Date based stock reports
  - 1 Product & group wise stock & purchase / sales statistics
  - 1 Outstanding orders, Invoices & shipments
  - 1 Online Financial Accounts

- Integration
- 1 Rate contract management for Suppliers & Sub contractors
- 1 Average/ moving weighted valuation
- 1 Variance reports

**INVENTORY CONTROL**

BusinessPro™ Materials provides ath production planner a comprehensive and dynamic solution to plan and efficiently optimize inventory levels, to support production, and at the same time, preserve precious financial resources

**Inventory Master File**

- 1 Make / buy / subcontract
- 1 Multiple line description for each item
- 1 User defined stock,sales and purchasing registers
- 1 Order rules,order point, order quantity,maximum/minimum limit control
- 1 Quantity on hand,on order,shortage,usage pattern

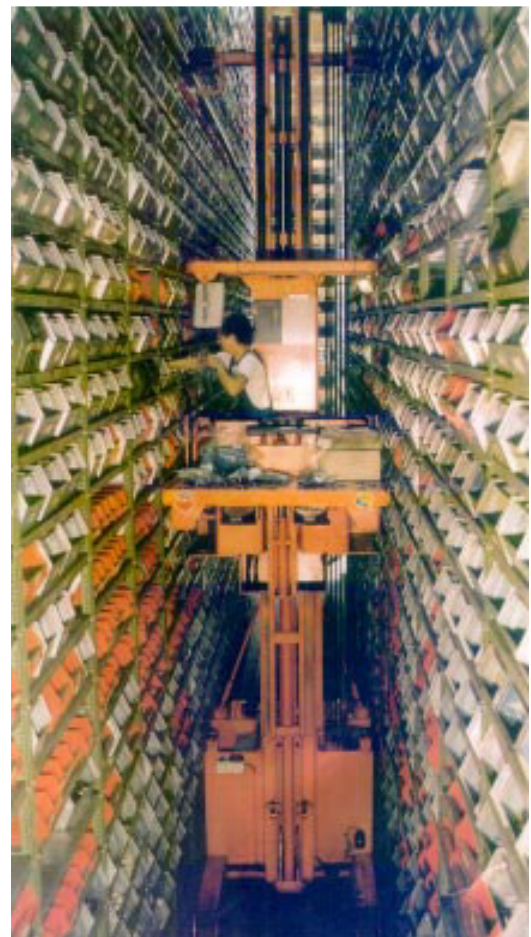
- 1 Material issue system – latest MWA standard
- 1 Material issue
- 1 Choice of units or measures and conversion from one unit to another during receipts and issues
- 1 Multiple stock rooms, bin location, ware houses
- 1 Material transfer transaction logging & reporting
- 1 User defined commodity codes

**Receiving**

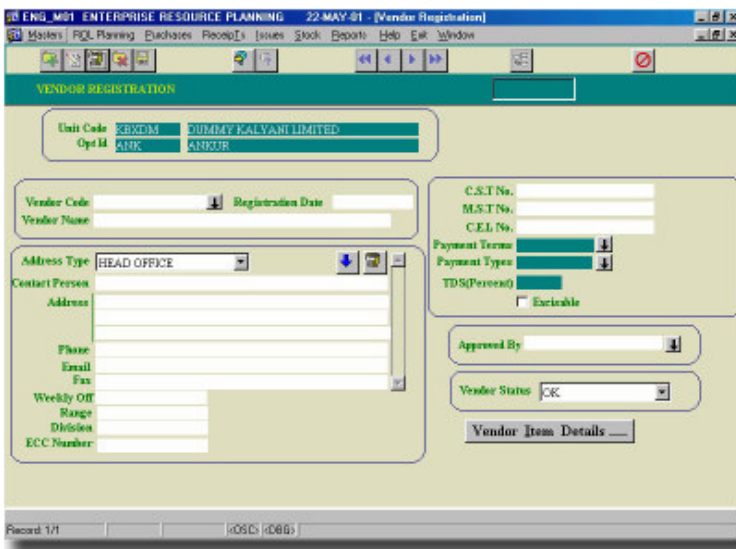
- 1 Special inspection store management of multiple stages of purchase
- 1 Receipt audit trails
- 1 Material return notes for rejected deliveries
- 1 Vendor performance analysis (via Pos)

**Control & Analysis**

- 1 Slow / fast / non moving stock analysis



- 1 Surrogate quantity management, batch expiration date based stock reports
- 1 Low / High balances of inventory
- 1 Product & group wise stock & sales statistics
- 1 Outstanding orders, invoices & shipments
- 1 Stock adjustments
- 1 On-line financial accounting integration
- 1 Rate contract management for suppliers & subcontractors
- 1 average / standard valuation
- 1 Variance reports
- 1 Preventive inventory management using MRP options





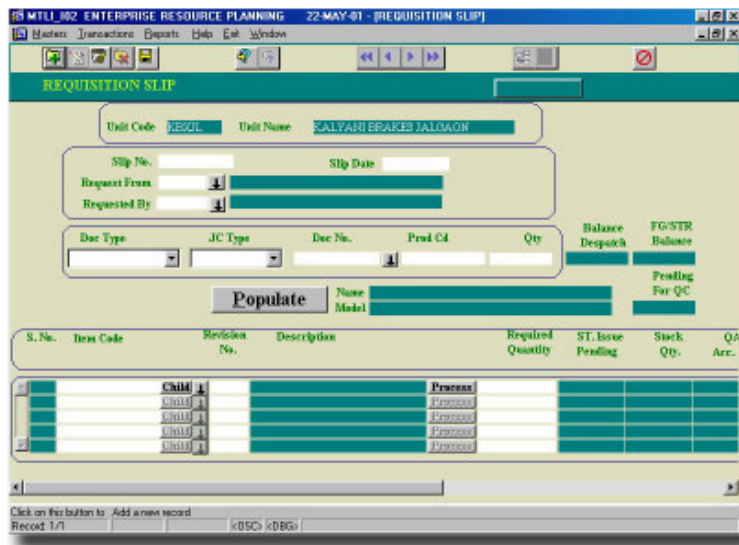
# Production Planning & Control

BusinessPro™ PPC is a proactive planning tool that unlocks the value of your production, planning & control functions through on-line tracking, optimizing schedules and ensuring better capacity utilization.

## Production Planning & Control

Master Production Schedule includes

- 1 Interface with Sales order & forecasting subsystem to accumulate gross demand
- 1 Flexible schedule generation
- 1 Multiple Schedule with variable time buckets for several continuous periods
- 1 User defined Buckets-day, month, years
- 1 Inclusion of firm orders, schedule requirements in the plan
- 1 Two level planning – regenerative & marginal Production requirement schedule Sensitivity analysis/



simulations (to check if additional orders can be accommodated)

- 1 Process sheets, cost cards, time study, work allocation, capacity planning, pre-dispatch quality checks
- 1 Concept of work centers & assemblies

## Shop floor control

- 1 Capacity planning / Manpower scheduling
- 1 Unlimited number of work centers, job categories & labor operations
- 1 Labor operation assigned to personnel or equipment
- 1 Job scheduling & status reporting

## Generation of Routing Sheets

- 1 Work center maintenance
- 1 Full bar coding Interface
- 1 Automatic work order scheduling
- 1 Rework

## Capacity Resources Planning

- 1 Manufacturing resource profile
- 1 Exception reporting & analysis
- 1 Overload planning

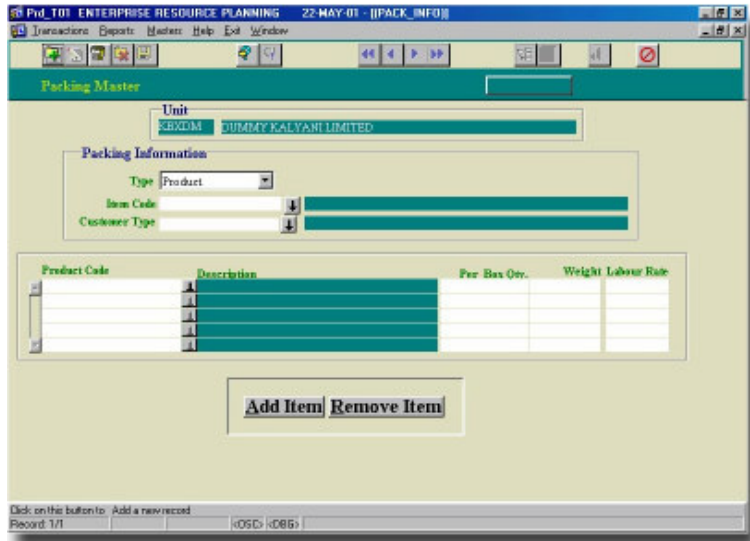
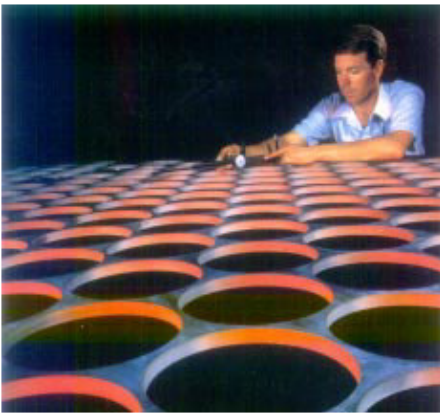




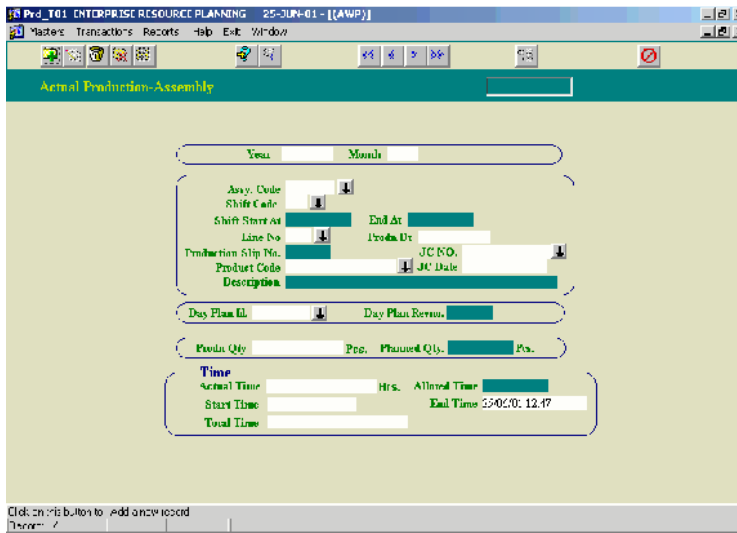
# Production

BusinessPro™ Production unlocks the value of your production functions through better tracking and optimizing of schedules, from work order generation to packing.

- 1 Work order generation
- 1 Work order split based on standard batches or actual Job scheduling & tracking of operations



- 1 Job card for assembly
- 1 Job card for work centre
- 1 Packing information
- 1 Location, shift employ mapping
- 1 Packing master
- 1 Packer master
- 1 Product versus packing master
- 1 Part versus packing master
- 1 Production slip generation
- 1 Production time recording



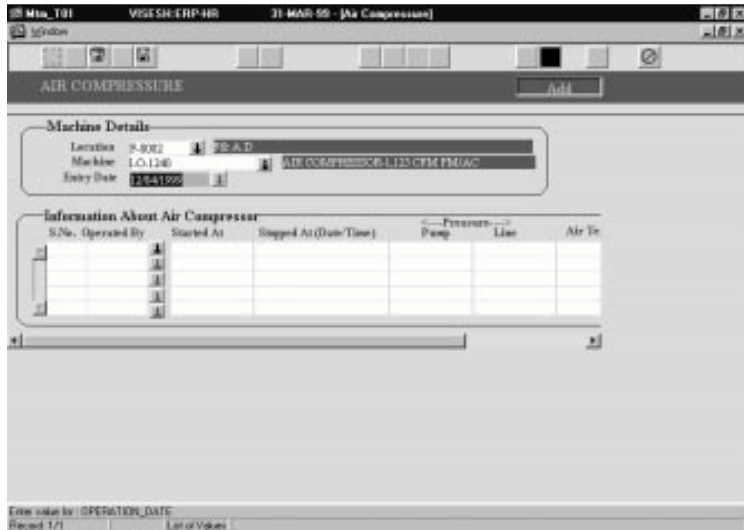


# Plant Maintenance

BusinessPro™ Plant Maintenance ensures long-term and continued availability of the production resources. Effective maintenance planning not only prevents system breakdown, but also reduces costs due to repairs or system replacement and production loss.

BusinessPro™ Plant Maintenance enables organizations to achieve optimum capacity utilisation by means of planned maintenance of equipments. It is capable of keeping track of various kinds of maintenance activities such as Preventive Maintenance, Breakdown Maintenance, and provide timely triggering of decision support information for plant managers.

It also keeps track of the maintenance schedule of machine units in respective work centres and Annual



Maintenance contracts of various servicing vendors. This module also logs all activities pertaining to plant maintenance and keeps historical data of plant and machinery.

- 1 Preventive maintenance schedule generation, planning & execution

- 1 Breakdown logging & rectification
- 1 Annual maintenance contract handling
- 1 Down time calculations
- 1 Spares & Consumables consumption analysis
- 1 Mean time between failure analysis
- 1 Dynamic log book management
- 1 Maintenance cost analysis
- 1 Equipment life estimation



# Quality

BusinessPro™ Quality Management is a pro-active tool that unlocks the value of your inspection, calibration, testing and deviation management functions through better analysis tools and triggering of corrective actions.

Quality management functions influence all processes within a company and all the phases of a product life cycle.

The QM module of BusinessPro™ links the tasks of quality management with those of the other applications, such as materials management, production, sales/distribution and cost accounting.

The QM module is integrated with the master data and processes of the following applications:

- 1 Material management (Purchasing, Inventory management, ware

house management, material requirement planning)

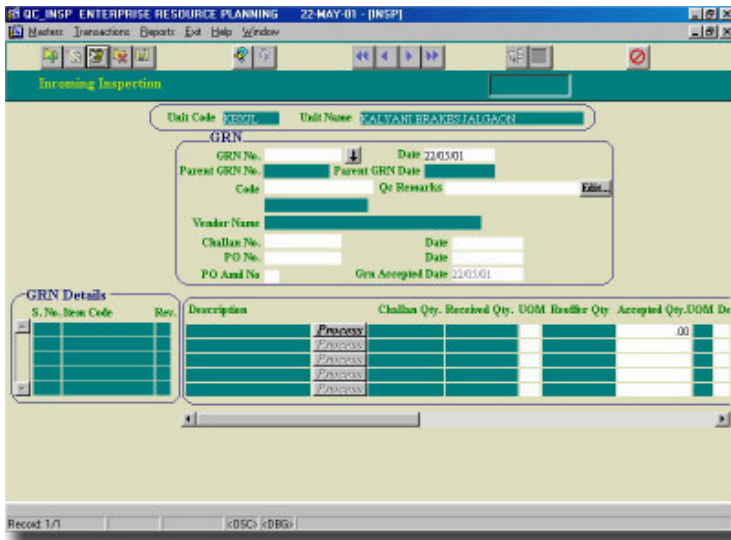
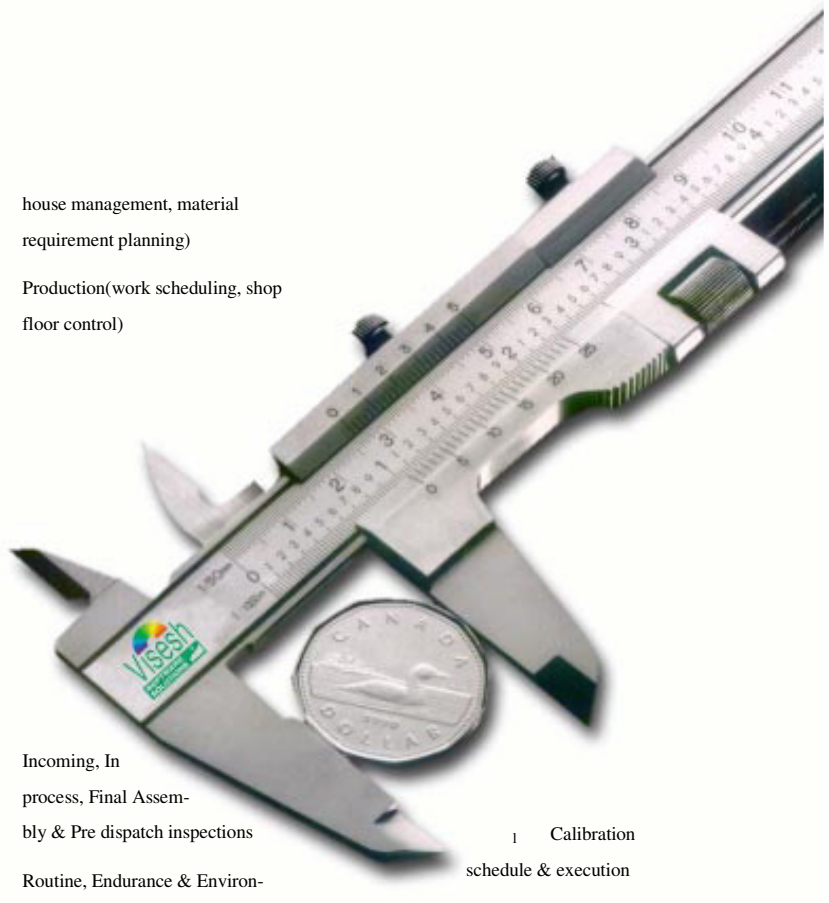
- 1 Production (work scheduling, shop floor control)

- 1 Incoming, In process, Final Assembly & Pre dispatch inspections
- 1 Routine, Endurance & Environmental testing
- 1 Laboratory management

- 1 Calibration schedule & execution

- 1 Calibration instructions & intimations
- 1 Deviation handling

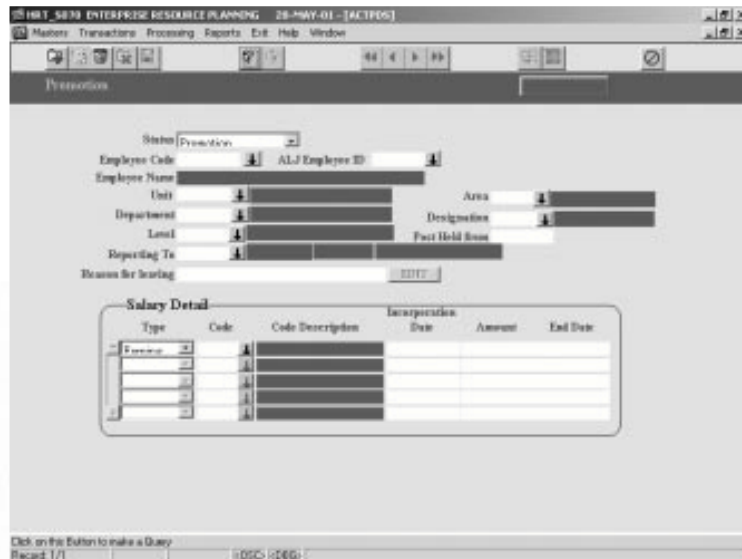
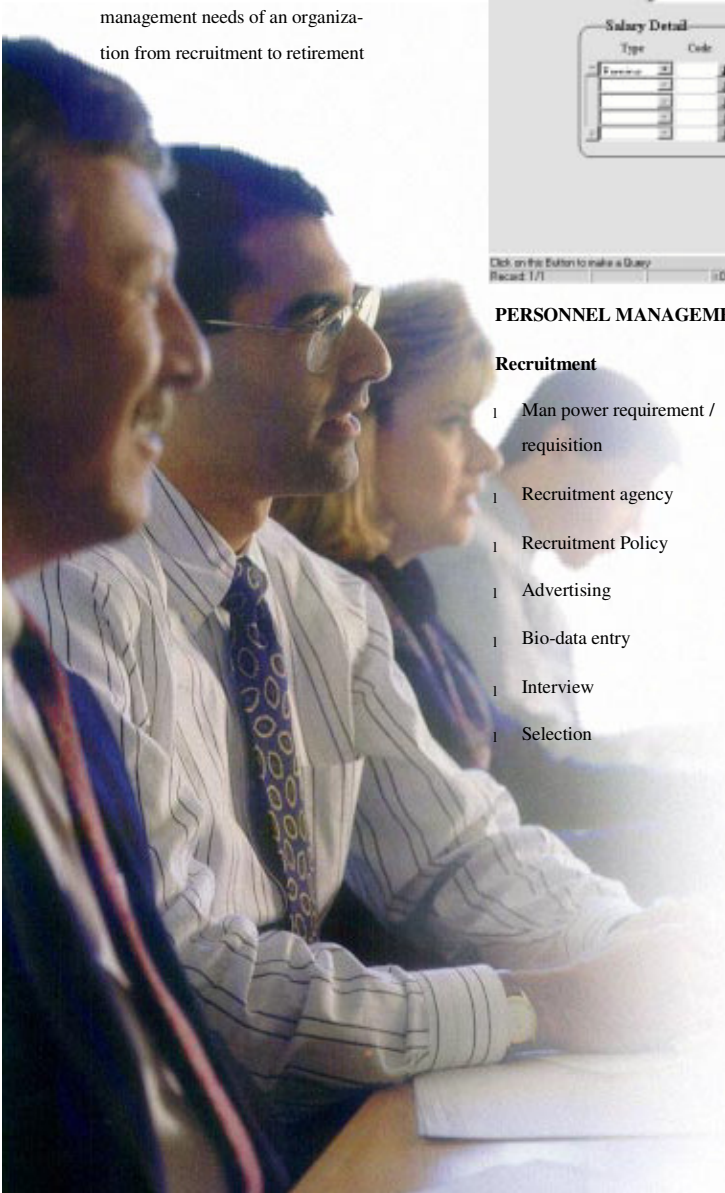
- 1 Sampling plan management
- 1 Rejection analysis
- 1 Pending inspection analysis
- 1 Vendor rating
- 1 Production stoppage due to rejections
- 1 In-house / Customer complaints
- 1 Warranty rejections
- 1 Deviation/rework/segregation details
- 1 Product / item history
- 1 Rejection & variance analysis





# Human Resource Management System (HRMS)

BusinessPro™ HRMS is a management tool that unlocks the value of your recruitment and payroll management functions through better mapping of skills, optimizing recruitment, managing feedback and controlling costs. BusinessSoft HRMS meets all the human resource management needs of an organization from recruitment to retirement



## PERSONNEL MANAGEMENT

### Recruitment

- 1 Man power requirement / requisition
- 1 Recruitment agency
- 1 Recruitment Policy
- 1 Advertising
- 1 Bio-data entry
- 1 Interview
- 1 Selection

- 1 Organizational standards, etc

### Personnel

- 1 Employee progress
- 1 Non conformity
- 1 Appraisal
- 1 Shifts
- 1 Exit interview details
- 1 All training details such as requirements, faculty etc

## PAYROLL MANAGEMENT

- 1 Flexible payments/deduction/benefits
- 1 Statutory reports
- 1 User defined pay slips & Pay Registers
- 1 Unlimited employees
- 1 Statutory Report



## The BusinessPro™ Advantage



**Easily Customizable.** Unlike other ERP solutions which use proprietary tools, BusinessPro deploys popular technologies like Developer 2000 which allow ample flexibility to customize applications.

**Highly Parameterizable.** BusinessPro allows extensive parameterization to define input behavior to suit operational needs.

**User Definability.** Capability to define units, multiple units, user code, operator ID can be dynamically

Windows 95/NT, Sun, Solaris

**Wide Database Support.** Oracle, MS SQL Server, Progress, MS Access

BusinessPro is tested and proven solution across industries with the advent of new technologies and management techniques BusinessPro will evolve to keep your ERP resource at the leading edge, always

changed to suit user requirements.

**Implementation Model.** Visesh implementation model is flexible and is done in phases so that the Return on Investment is faster compared to other implementation models.

**Fixed Time Fixed Cost.** To deliver better return on investment, Visesh drafts and executes projects within budget, in time.

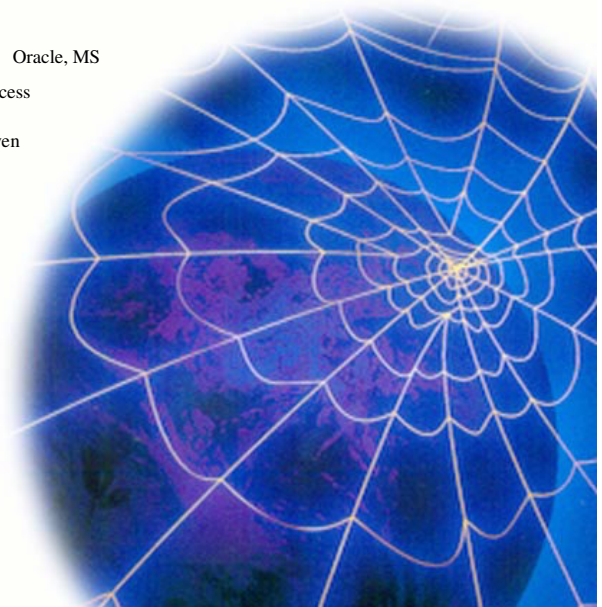
**Strong Implementation Support.** Unlike other vendors who implement solutions through business partners, Visesh personnel directly implement the solution through a network of offices across the globe.

**Investment Protection.** Visesh protects customer investments made in earlier versions and provides easy migration to latest technologies.

**Migration to Web Enabled Applications.** Visesh application on Citrix Metaframe enables users access information across organisation without having to invest in required tools on their desktops

**Hardware Platforms.** Desktops, Intel Platforms & Mainframes

**Operating Platforms.** Unix,





## BusinessPro™ Delivery Model

### Charting the course to better business processes

Visesh's delivery methodology, incorporates the best practices. The implementation services are proven over a wide range of projects across industry segments.



#### Pre-implementation **Scoping**

Detailed study of the processes involved in the enterprise

Mapping business events

Establishing clear objectives of the processes in practice

#### Process **Mapping**

Mapping processes with standard package capabilities

Fit level assessment based on customer's strategic business scenarios and comfort level

#### Gap Analysis

Quantifying the gap between organizational needs and actual package capabilities

Documenting and classifying the gaps as essential and desirable elements

Prioritizing elements to be taken up for custom development parallelly or on completion of the standard package implementation based on strategic requirements of the customer

Delivering a fully functional Prototype alongwith a formal implementation document to key users for their feedback and approval

#### Implementation

Implementation by Visesh Project Team and Customer Resource Team

Review of Prototype by key user

Live data is put online progressively and parallel run initiated for approval

#### Training

End-users and in-house maintenance team are trained on the package

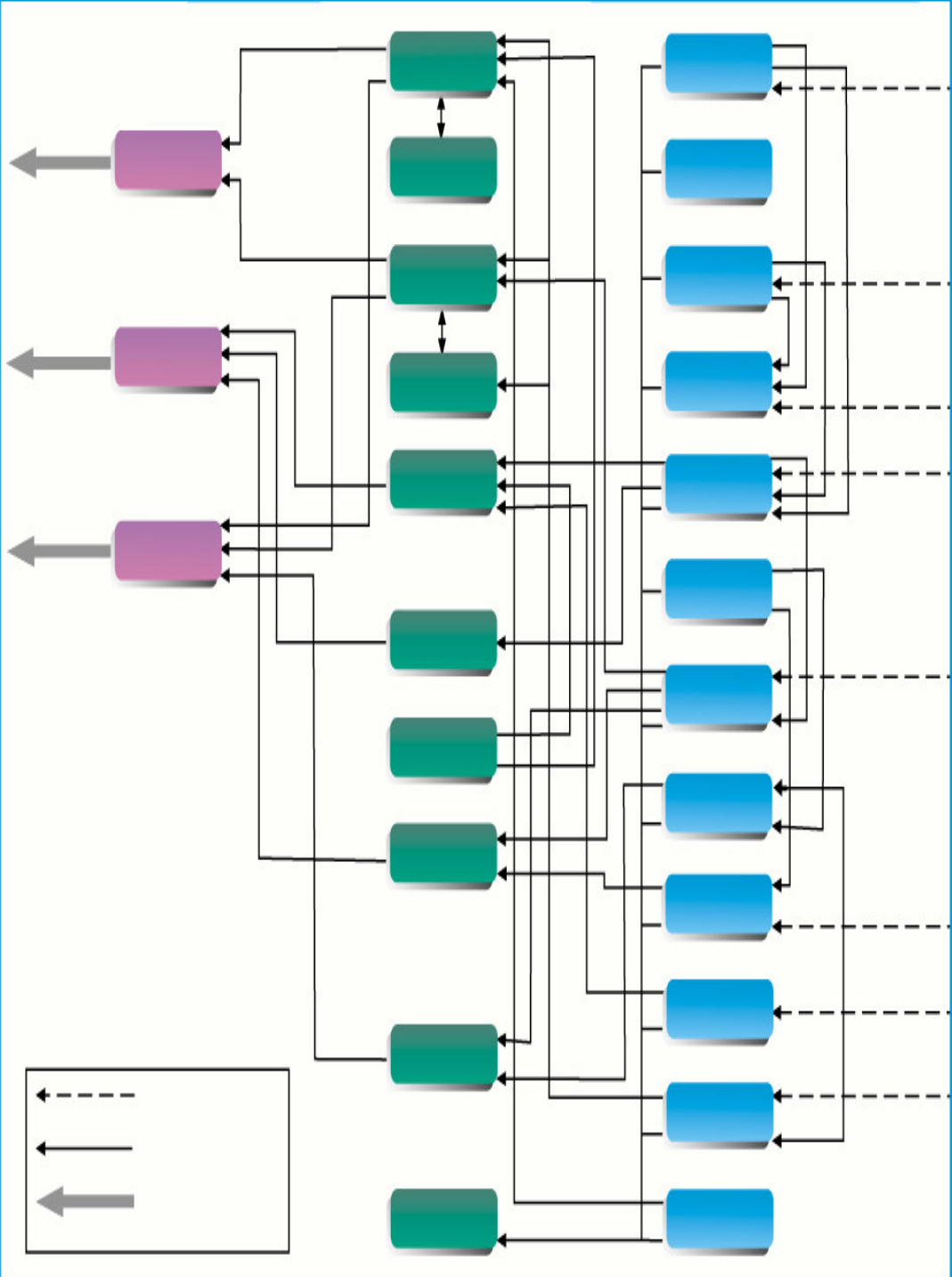
#### Post Implementation **Maintenance**

Annual Maintenance Agreement covers troubleshooting, enhancements and bug-fixing and a committed Complaint Redressal service.

#### Upgrade Services

Implementation of upgraded versions of the product time to time

Incorporating customised addons in the package



## Quality Policy

Visesh Infotecnics is committed to meet and exceed customer expectations through cost-effective, quality software solutions through continuous innovation and technical upgradation by keeping pace with global information technology revolution thereby providing the competitive edge for our customers.



Established in 1989, Visesh has grown from strength to strength to provide software solutions that meet the critical business requirements of many of the multi-locational businesses and fast growing global enterprises. Software development processes at Visesh conform to ISO 9001 standards. Our capabilities are backed by sound corporate resources.



## VISESH INFOTECNICS LTD.

An ISO 9001 Company

- REGISTERED OFFICE : 508, Arunachal Building 19 Barakhamba, Connaught Place, New Delhi 110001 India.  
Tel# +91 - 11 - 47613300 Fax# +91 - 11 - 47613399. e-mail: delhi@viseshinfo.com
- CORPORATE OFFICE : 325, C M H Road, Indiranagar, Bangalore 560 038 India.  
Tel.# +91 80 56984747/48, Fax.# +91 80 527 4426. e-mail: bangalore@viseshinfo.com
- REGIONAL OFFICE : 3085, Oberoi Estate, Chandivli Andheri (E), Mumbai 400 072 India.  
e-mail: mumbai@viseshinfo.com
- OVERSEAS OFFICE : 8/5 Sukhivvit, 28 Klongton, Klongtoey, Bangkok -10110 Thailand. Tel.# +662-2616321 to 24, Fax# +662-2616325

visit us at [www.viseshinfo.com](http://www.viseshinfo.com)