



powerERP Pro

A COMPLETE BUSINESS SOLUTION
A COMPLETE BUSINESS SOLUTION

powERP Pro



Introducing pow ERP Pro™

Need for pow ERP Pro™

In the SME segment manufacturers and jobs shops had only two software alternatives:

- a) Invest in a mid-range or high-end ERP manufacturing package.
- b) Operate with a generic accounting system.

Most mid-range and high-end ERP manufacturing software packages do a great job for big companies, but for smaller companies they are complex, costly, and difficult to learn and use. Most generic accounting packages do a great job on the financial side, but fail to address bottom-line manufacturing issues such as production planning, scheduling, and job costing.

powERP Pro™ bridges the gap between these two alternatives by offering you a low-risk, practical solution that meets the needs of the vast majority of manufacturers and job shops.

powERP Pro™ has been developed in VB & Interbase RDBMS environment and can be implemented on wide range of hardware and operating systems. Interbase ensures that your investment in time and money on the application software is secure.

powERP Pro™ incorporates the following:

- Financial Analysis & Management
- General Ledger
- Accounts Receivables
- Accounts Payables
- Inventory Control
- Sales & Distribution
- Purchase Management
- Manufacturing
- Plant Maintenance
- Quality
- Human Capital Management



Salient Features

Fully integrated software covering the core functionalities of any organization viz. Sales, Purchase, Inventory, Manufacturing and Finance.

Software made on the business process models used by MRP/ERP software's with 15 years experience of handling wide range of users.

Special efforts made in designing to make the software user friendly. Uses widely accepted software platform Visual Basic, which allows it the flexibility of upgrading to higher end platforms

Simplicity: It is one of the most simple and complete business solutions available. With this, organizations of small sizes can deploy enterprise wide applications that are modular, scalable and reliable. It makes data available across the enterprise.

Speed: User can get any reports instantaneously for any date / period and can toggle between reports,

either accounting or inventory or even from one unit to another unit instantaneously.

Power: It has the power to generate management information, which would help the management in taking correct and quick decisions resulting in faster growth of business.

Flexibility: It is very flexible to use and can adapt to any business needs rather than the user trying to change the way his business is run to adapt to the package.

Birds eye View/ Drill Down Display: Allows users to Drill Down from any report to lower levels.

Real-Time : Updates all reports (from day book to Balance sheets) as and when the transactions are entered and does not need any back end or day/period end process to be done.

Data Reliability & Security Level: The backend is on Borland Interbase. Security levels are available with roles and privileges well defined.

Transfer of Data: Master Data transfer from one unit to another unit.

Print Preview: Any user would ideally like to view format of reports / Invoices / Vouchers before printing the same.

Multi-User Support: The software can be installed on a network working with different operating systems.

Simple and Rapid Installation: This has a simple installation procedure and at the time of installation the user can opt to install the program files on any drive (i.e. if the hard disk has partitions) as well as specify the directory names where the program files are to be installed.

Online Help: Provides user-friendly context sensitive online help for the user. First time power ERP ro™ user can start using the application with minimum training and it also helps the user to do the configuration. power ERP ro™ allows extensive parameterization to define input behavior to suit operational needs.

Database: The RDBMS used is Borland's Interbase.

Operating System Supported: Windows NT/2000/2003/XP.



FINANCIAL ANALYSIS AND MANAGEMENT

The Financial Management Module incorporates Financial Accounting, Accounts Receivable, Accounts Payable and Management Reporting.

Salient Features

- 1 Integrated General Ledger, Accounts Receivable, Accounts Payable and MIS Reporting.
- 1 Multi Company and Multi Departmental Accounting and consolidation at company level.
- 1 Trial Balance, Balance Sheet, Profit & Loss Account at unit level as well as company level.
- 1 Analysis reports by Department.
- 1 Multi currency system enables maintenance of Accounts in foreign currency.
- 1 Post-Dated Cheques Management.
- 1 User-definable summary and detailed formats for Balance Sheet and Profit & Loss Statements.
- 1 Flexible Chart of Account Coding Structure.

Balance sheet and Profit & Loss Account classifications are independent of the Account Codes. This facilitates the shifting of Balance Sheet or Profit & Loss account heads from one group to another, without re-coding the main accounts, and losing the General Ledger history of that account.

- 1 Allows for user defined accounting periods.
- 1 Generalized transaction entry screens to simplify data entry procedures.
- 1 Option of batch posting of transactions.
- 1 VAT and Sales Tax handling.
- 1 Un-posted statistics.
- 1 Ledger Interface for Purchase & Sales transactions.
- 1 Ratio Analysis.
- 1 Bank Reconciliation statement.

	Debit	Credit
ASSETS		
CASH & BANK	100,000.00	100,000.00
DEBTORS	200,000.00	200,000.00
CREDITORS		200,000.00
INVESTMENTS	15,000.00	
FIXED ASSETS	500,000.00	
CURRENT ASSETS	160,000.00	
TOTAL	975,000.00	975,000.00
LIABILITIES & EQUITY		
CURRENT LIABILITIES		200,000.00
LONG TERM LIABILITIES		200,000.00
EQUITY		575,000.00
TOTAL	975,000.00	975,000.00

Reports & Queries

powERP ro™ provides for exhaustive querying and reporting in the financial module to take care of daily Financial Reporting, Ledgers, Statistical reports and MIS.

On-Line Queries

- Transaction Enquiry.
- Account Enquiry.
- User Defined Query Builder.

General Ledger Reports

- Voucher Printing.
- Bank Book.
- Cash Book.
- Bank Position Report.
- Cash Position Report.
- Daybooks.
- General Ledger Listing.
- Trial Balances with Drill Down Option.
- Bank Reconciliation.



TDS Registers.
VAT reports.

Accounts Payable Reports

Purchase Register.
Supplier Ledger.
Balance Confirmation.

Accounts Receivable Reports

Customer Ledger.
Debtors Aged Analysis.
Sales Register.
Debtor Statement.
Balance Confirmation.

Final Accounts

Profit & Loss Account (Standard/User defined).
Balance Sheet (Standard/User defined).

MIS Report

Budgeted Profit & Loss.
Transaction Analysis.
Budget Variance Analysis.
Cash Flow Statement.
Cash Flow Projections.
Expense Analysis.
Ratio Analysis.



R



PURCHASE MANAGEMENT

Purchase Management unlocks the value of your purchase process by significantly enhancing the productivity of your quotations, forecast orders and shipping related functions.

Salient Features

- 1 Purchase Requisition.
- 1 Purchase Requisition approval process.
- 1 Pending purchase requisitions.
- 1 Supply quotation entry & quotation comparison
- 1 Vendor ship to, bill to information.
- 1 Vendor part number & account number entry.
- 1 Purchase Order approval process.
- 1 Subcontract management.
- 1 Pending delivery follow-up.
- 1 Purchase Order pre-closure.
- 1 Landed Cost simulation.
- 1 Automatic posting of receipt of inventory (perpetual inventory).
- 1 Rejection returns to supplier.
- 1 Vendor analysis for quantity & delivery.
- 1 Support for partial deliveries.
- 1 VAT / Sales tax Calculation.
- 1 Auto generation of Raw material required based on the work order.
- 1 Interface to accounts payable.

Reports Generated:

- Pending Purchase requisitions by PR Type + PR number.
- Pending Order By Vendor.
- Pending Order By item.
- Receipt transaction checklist.
- GRN by Vendor.
- GRN by Item.
- Item Inquiry Order & GRN.
- Supplier Enquiry.
- Material Requirement Enquiry.
- Quotation Comparative Statement.

The screenshot displays a software window titled "Landed Cost Simulation". The interface is divided into several sections:

- Supplier Information:** Fields for Supplier Code, Supplier Name, Order Number, Order Date, Invoice Date, and Store Code.
- Item Information:** Fields for Item Code, Description, UOM, Received Quantity, Rate, Base Value, Qty To, Bill Value, Sales Tax, and Total Value.
- Financial Summary:** Fields for Net Value, Freight, and Insurance.
- Additional Fields:** Fields for Vendor, Material, and other relevant data.

Item Code	Description	UOM	Received Quantity	Rate	Base Value	Qty To	Bill Value	Sales Tax	Total Value

INVENTORY MANAGEMENT

Inventory Control System is a comprehensive solution that unlocks the value of your inventory control processes through better controls on receipts, storage movement and analysis of stocks.

Salient Features

- 1 Multiple line description for each item.
- 1 Lead-time, order quantity, maximum/ minimum limit control.
- 1 Quantity on hand, on order, shortage.
- 1 Material issue system moving weighted average.
- 1 Receipt issue check list.
- 1 Stock adjustments.
- 1 Material transfer transaction logging & reporting.
- 1 Material return notes for rejected deliveries.
- 1 Month wise analysis of receipts and issues.
- 1 Stock level enquiry.
- 1 Monthly stock statements.

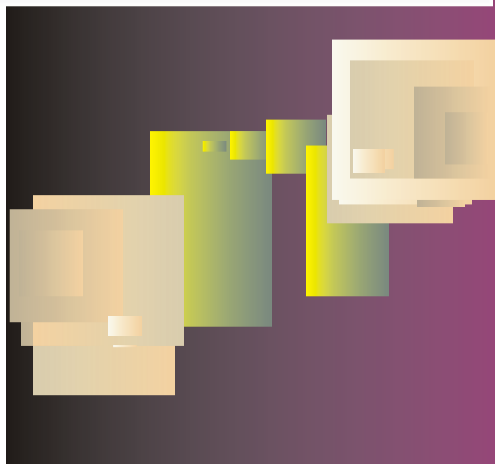


The screenshot shows a software window titled 'Online Inquiry (New)'. It contains several input fields for 'Customer Details' including Customer Name, Address 1, Address 2, City, State, Pin Code, Tel, Fax, Email, Contact Person, Contact No, and Customer Reference No. Below the form is a table with the following columns: 'Cur Part No', 'Old Part No', 'Description', 'Qty Ordered', 'Cost Expected', 'Expected Date', and 'Special Part, Spec'. The table is currently empty.

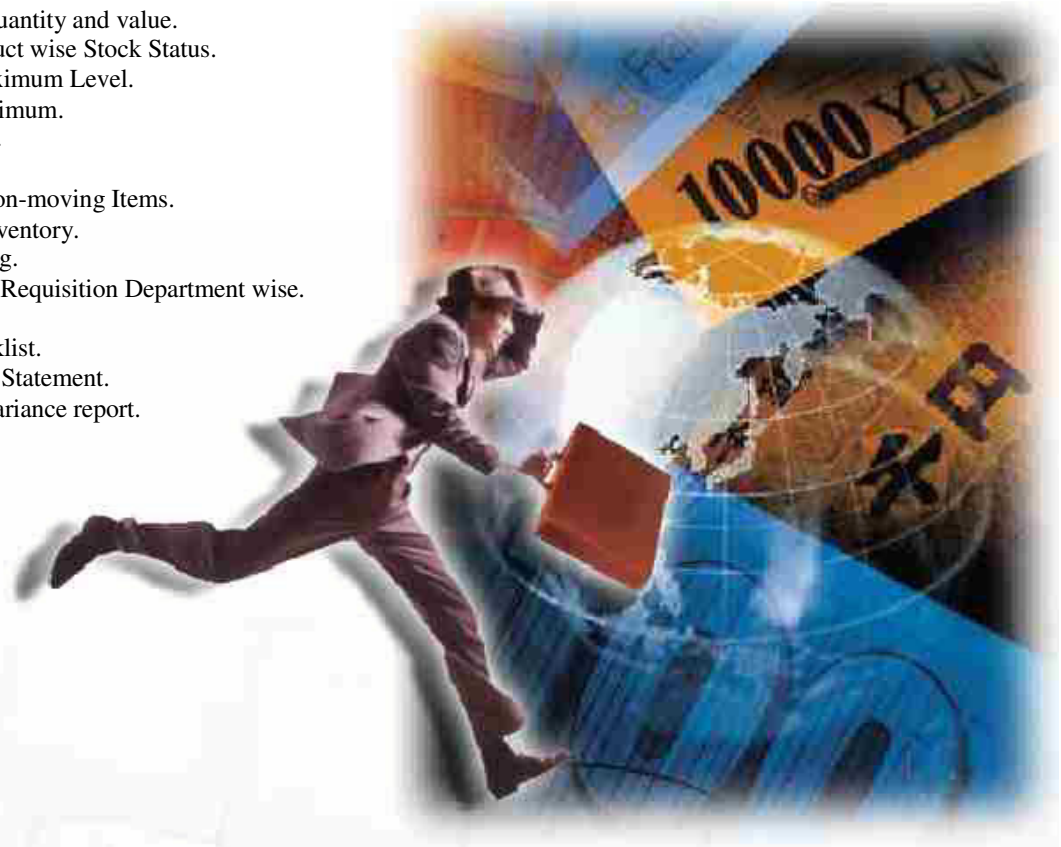
- 1 Moving weighted average / standard valuation.
- 1 Outstanding orders, invoices & shipments.
- 1 Expiry Date Revalidation.
- 1 Perpetual Stock Taking.

Reports Generated:

- Stock Ledger.
- Landed Cost for Goods Receipt.
- Adjustments During a Period.
- Stock Transfers.
- Store wise Item Stock Valuation.
- Item Stock Movement.
- Stock Aged Analysis.
- Analysis of stock by Consumption.



- Stock Status by quantity and value.
- Store wise / Product wise Stock Status.
- Stock Above Maximum Level.
- Stock Below Minimum.
- Inventory Listing.
- ABC Analysis.
- Slow moving / Non-moving Items.
- Sub-contractor inventory.
- Stock Order listing.
- Pending Material Requisition Department wise.
- Daily Stock List.
- Transaction checklist.
- Batch wise Stock Statement.
- Physical Stock Variance report.



UPDT ONE [Costing for Product]

Cost: COSTY COST ONE
 Product Code: 100-HH-301-000 PERSONAL CYCLE
 Quantity:

Standard Rate Latest Rate Average Rate

Print Export

Item Code	Description	Per Unit Of Product	Rate	Value
100-HH-100-000	BACK SEAT ASSEMBLY	1.00	12000.00	12000.00
100-HH-200-000	FRONT SEAT ASSEMBLY	1.00	11500.000	11500.000
100-HH-300-000	SPROCKET ASSY	1.00	0.000	0.000
100-HH-400-000	ENGINE ASSEMBLY	1.00	500.000	500.000
100-HH-400-100	PISTON	1.00	500.000	500.000
100-HH-400-200	BORE	1.00	0.000	0.000
100-HH-400-400	PISTON RINGS	3.00	0.000	0.000
100-MC-001-200	GEAR CASE	1.00	0.000	0.000
Total Cost				2380.000
Coverage:		% Allocation:	Value:	
OVERHEAD EXPENSES		10.000	2400.000	
SALARIES, WAGES AND OTHER WELFARE EXPENDITURE		15.500	3720.000	
CREDIT PURCHASE PAYMENT		12.000	2880.000	

Item: Record 1 15/10/2002

Sales & Distribution Management

Sales Order Processing unlocks the value of your sales processes by significantly enhancing the productivity of your quotations, forecast orders and shipping related functions.

Salient Features

- 1 Sales Forecast.
- 1 Sales Enquiry Tracking.
- 1 Quotation.
- 1 Separate due dates for each item on Sales Orders.



Item Code	Description	Quantity Received	Quantity Accepted	Quantity Rejected	Rejected
100-HH-100-100	BACK TYRE	1.00	1.00	0.00	0.00
100-HH-100-200	BACK RIM ASSEY	1.00	1.00	0.00	0.00
100-HH-100-300	BACK SPOKES	1.00	1.00	0.00	0.00
100-HH-100-400	BACK RIM	1.00	1.00	0.00	0.00
100-HH-100-500	FREE WHEEL	188.00	81.00	25.00	23.88
100-HH-300-100	BIG SPROCKET	20.00	20.00	0.00	0.00
100-HH-C00S-STMS X 10 CSK SCREW		10000.00	9750.00	250.00	2.50
100-HH-C00S-STMS X 10 CSK SCREW		6000.00	6000.00	0.00	0.00
100-HH-C00S-STMS X 15 CSK SCREW		25000.00	25000.00	0.00	0.00
100-HH-C00S-STMS X 10 Allen Screw		25000.00	25000.00	0.00	0.00
100-HH-C00S-STMS X 10 Allen Screw		20000.00	20000.00	0.00	0.00
100-HH-C00S-STMS X 15 plated SCREW		10000.00	10000.00	0.00	0.00
100-MC-001-000-SPRING		5.00	5.00	0.00	0.00
100-MC-001-100-HARUTH SEAT		4.00	4.00	0.00	0.00
100-MC-001-100-RECLINE MECHANISM		6.00	6.00	0.00	0.00
100-MC-001-100-PINON DISC		3.00	3.00	0.00	0.00
100-MC-001-200-GEAR CASE		20.00	20.00	0.00	0.00
11-100-001	BONNET	50.00	50.00	0.00	0.00
5mm Rivet	iron Rivet	100.00	100.00	0.00	0.00

- 1 Standard Orders (regular scheduled shipment).
- 1 Volume discounts.
- 1 Sales Order Processing.
- 1 Sales Order pre-closure.
- 1 Invoice generation.
- 1 Complete or partial shipments with separate invoices.
- 1 Allows goods or services on the same order or otherwise.
- 1 VAT / Sales tax Calculation.
- 1 Sales Returns.
- 1 Interface to accounts receivable.



Reports Generated:

- Sales Invoice Register.
- Cash Sales Register.
- Quotation Status.
- Price List.
- Pending Delivery Note.

Client wise / Product wise Order Report.
 Average Sales (Consumption).
 Profit margin report.
 Sales Order listing.
 Sales Graph.
 Sales Analysis.
 Forecast vs. Actual.

Manufacturing

Manufacturing module unlocks the value of your planning processes by providing information that is required to make realistic and balanced production plans, measure progress in meeting plans, highlight significant deviations to initiate timely corrective action or develop alternate course of action.



Machine Utilization Analysis

Period From: 01/2002
 Period To: 12/2002
 Machine Code From:
 Machine Code To:
 Shifts: First Shift Second Shift
 Report By: Date Period
 View Export Print Exit

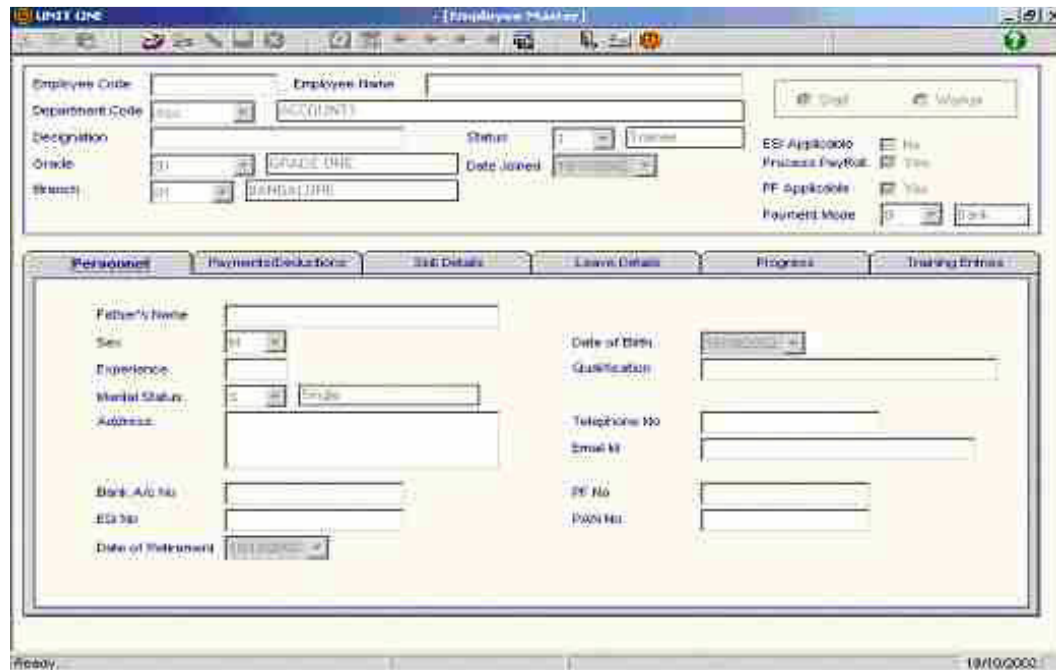
Details

	Date	Machine Code	Machine Description	Normal Shift Utilization %
1	01/05/2002	MM0001	MILLING MACHINE	100
2	01/05/2002	M01	MACHINE 2	237.5
3	02/05/2002	M01	MACHINE 2	125
4	03/05/2002	M01	MACHINE 2	120
5	04/05/2002	M01	MACHINE 2	100
6	01/06/2002	11003	PERCINO TOOL	100
7	01/07/2002	11003	PERCINO TOOL	25

10/10/2002

Salient Features

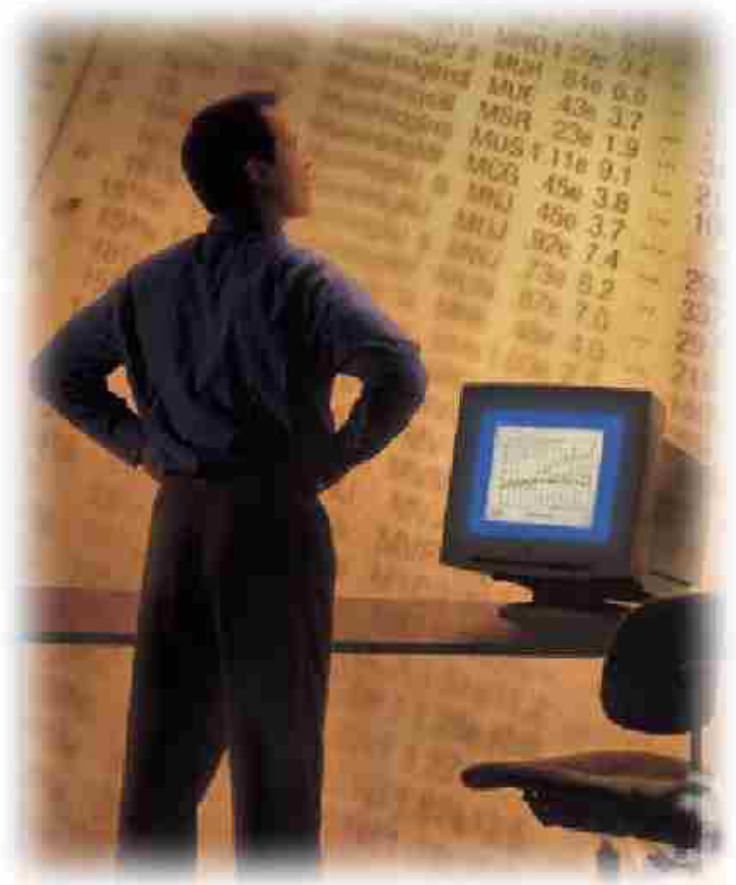
- 1 Comprehensive BOM system with multilevel explosions.
- 1 Generates procurement plans based on requirement.
- 1 Recommends direct purchase, shop floor or Sub-contract job orders for Production Plan considering stock on hand & pending Purchase Orders.
- 1 Effective Purchase Management System comprising system recommended Purchase Orders, Automatic Rate Checks & follow up reports fully.
- 1 Shop floor & Subcontract Management monitors work orders, material consumption & Scrap receipts.
- 1 Informs WIP at shop Floor & Sub-contractor stocks on-line.
- 1 Updates conversion charges of shop floor & Sub contractors.

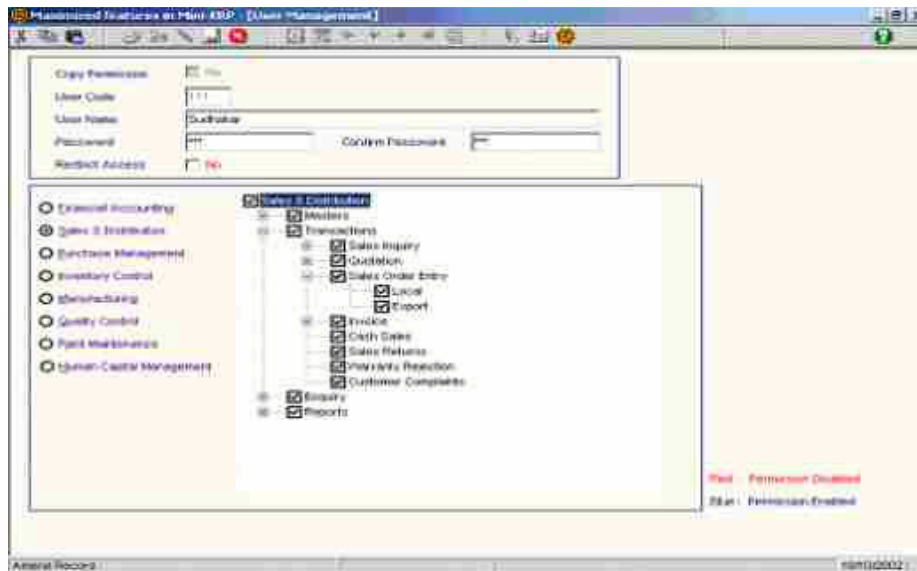


- 1 Automatic stock updating of raw material at shop floor & finished goods at stores, using BOM.
- 1 Flexible product costing.
- 1 Production batch controls with expiry date.
- 1 Multiple stock rooms & bin Location, Warehouses.
- 1 Material transfer transaction Logging & Reporting.
- 1 Material return notes for rejected deliveries.
- 1 Concept of Work center and Assemblies.
- 1 Exception reporting and analysis.
- 1 Work Order generation.
- 1 Automatic work order generation for lower level BOM items.
- 1 Work Order status reporting.

Reports Generated:

- Work Order summary.
- Job Order summary.
- Work Order progress.
- Material requirement consolidate and detail.
- BOM revision report.
- BOM explosion report.
- Cost cards.
- Transaction listing.





Quality Module

powERP ro™ quality module is a pro-active tool that unlocks the value of your inspection, calibration, testing and deviation management functions through better analysis and triggering of corrective actions.

Quality Management functions influence all processes within a company and all the phases of a product life cycle.

powERP ro™ links the tasks of Quality Management with those of the other applications, such as Materials Management, Production and Sales.

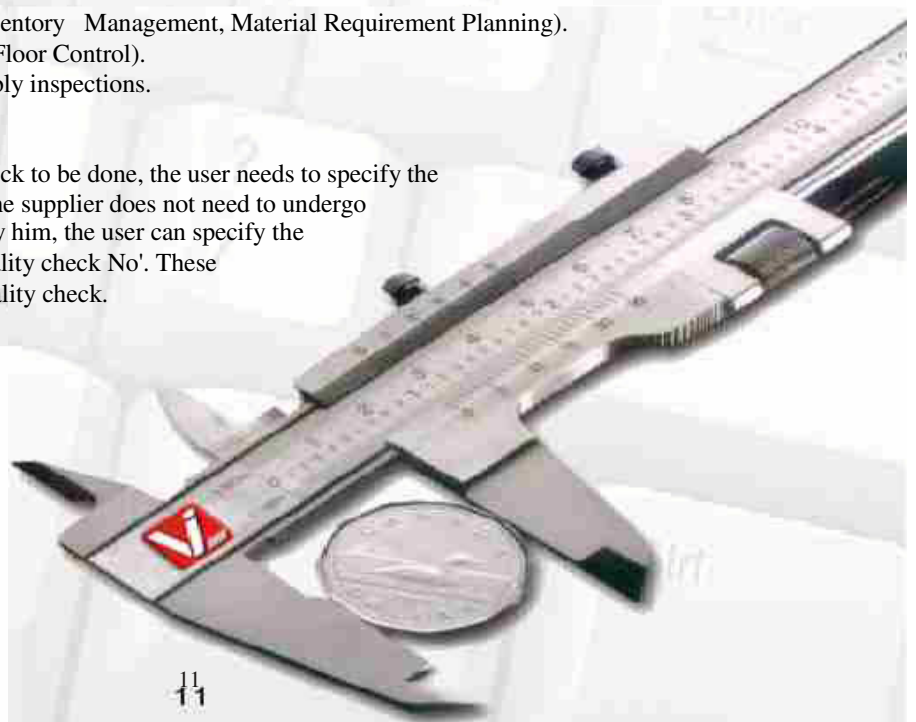
Salient Features

- 1 Material Management (Purchase, Inventory Management, Material Requirement Planning).
- 1 Production (Work Scheduling, Shop Floor Control).
- 1 Incoming, In-process & Final Assembly inspections.
- 1 Calibration schedule & execution.

If any item does not require quality check to be done, the user needs to specify the same in the item master. Similarly, if the supplier does not need to undergo quality process for the materials sent by him, the user can specify the same in supplier master with a tag 'Quality check No'. These supplier transactions do not require quality check.

Reports Generated:

- Rejection analysis.
- Vendor rating.
- Pending inspection analysis.
- Warranty rejection.
- Customer complaint analysis.
- Defect analysis.



Plant Maintenance

powERP ro™ Plant Maintenance ensures long-term and continued availability of the production resources. Effective maintenance planning not only prevents system breakdown, and it reduces costs due to repairs or system replacement and production loss.

powERP ro™ Plant Maintenance enables organizations to achieve optimum capacity utilization by means of planned maintenance of equipments. It is capable of keeping track of various kinds of maintenance activities such as Preventive Maintenance, Breakdown Maintenance and provides timely initiation of decision support information for plant managers.

This module also logs all activities pertaining to plant maintenance and keeps historical data of plant and machinery.

Salient Features

- 1 Preventive maintenance schedule generation.
- 1 Planning & execution.
- 1 Breakdown logging & rectification.
- 1 Annual maintenance contract handling.
- 1 Spares & Consumables consumption analysis.



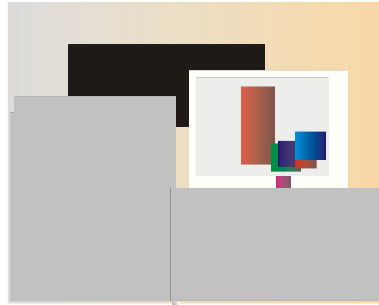
Human Capital Management

powerERP^{ro}™ HRMS is a management tool that unlocks the value of your payroll management functions through better mapping of skills.

powerERP^{ro}™ HRMS meets all the human resource management needs of an SME organization. It also has a very powerful user defined query builder.

Payroll management.

- 1 Flexible payments/deduction/benefits.
- 1 User defined pay slips & pay registers
- 1 Unlimited employees
- 1 Leave data entry
- 1 All training details such as requirement, faculty etc
- 1 Salary amendments
- 1 Arrear calculation
- 1 Pay slip printing
- 1 Salary breakup
- 1 Birthday reports
- 1 Progress report
- 1 PF Register
- 1 ESI Register
- 1 Professional Tax report
- 1 Gratuity report



System Features

A key aspect of powerERP^{ro}™ is getting the right information to the right person at the right time. With its high degree of flexibility in granting user access to various parts of the system, the biggest problem in companies - the information bottleneck, is solved. Drawing from a common database, users are assured of consistent and reliable information.

SECURITY

- 1 Login name and encrypted password protection.
- 1 Manages multiple users access and prevent potential data corruption using record locking capability.
- 1 Grant/restrict user access to various parts of the system individually.

DATABASE MANAGEMENT

- 1 Concise screen formats for accurate data input.
- 1 One stop data entry and maintenance.
- 1 An enterprise-wide relational database management system that generates compatible, consistent data quickly and efficiently.
- 1 Auto reference numbering system for financial, production, material and sales.
- 1 User defined Calendar year for finance and business operation.

DOCUMENTATION

- 1 Complete on-line reference guide.
- 1 Powerful search capability simple and advanced search.
- 1 Screen shots - including an explanation of each field.

VISESH INFOTECNICS LTD.

(An ISO 9001: 2000 Company)

www.viseshinfo.com

Background

Visesh Infotecnics Ltd was established in the year 1989 with the objective of becoming a leading ERP solution provider to the Indian industry. Over the years it has built up a sizeable customer base for its ERP products in India and also across the globe. Visesh Infotecnics Ltd through its commitment and quality work has created a niche for itself in the Software Industry.

Visesh Infotecnics Ltd has its operations across the country and offices in the three major metros viz. Delhi, Bangalore and Mumbai apart from its overseas office at Thailand.

The company is engaged in providing the following services:

- 1 Enterprise business applications & related services
- 1 Client server based applications
- 1 E-com, m-com and web based applications
- 1 Network integration
- 1 Security solutions
- 1 Hardware supply & maintenance
- 1 Software implementation & maintenance
- 1 Technology & systems consultancy



Visesh Infotecnics Ltd is a fast growing company committed to providing reliable and cost-effective software solutions to organizations globally. In the highly competitive and dynamic software business, the key to success lies in improving software quality, enhancing efficiencies and reducing costs on a continuous basis. Visesh is focused on these key factors in order to achieve mission-critical business goals. Exceeding our customer expectations is an ongoing activity. The need of the hour is to strive hard towards providing our customers with defect-free solutions and deficiency-free services.

Emphasis on quality, world-class human resource and leading edge solutions drive our commitment. Visesh has a state-of-the-art software development facility at Gurgaon. The facility recruits and nurtures software talent through rigorous training programs.

The company has under its fold, over 175 highly skilled and experienced professionals from system analysts, system designers, programmers, system integrators, Engineers, MBA's and MCA's to Cost Accountants, Chartered Accountants and Marketing professionals, with tremendous domain expertise in their own fields of specialization. Our Software Engineers have their expertise on platforms like Visual Basic, VC++, Oracle/Developer 2000, SQL Server, ASP, Java, EJB, JSP, C, C++, Cobol, Corba, COM, DCOM, Rational Rose, UML, Java Beans, WebLogic and IBM Web Sphere application server.

We constantly enhance our quality standards to be at par with the best in the world. With a successful track record of serving the most demanding customers, Visesh can bring you the benefits of working with a partner with software skills, project management expertise and domain knowledge in every aspect of Information Technology.

Our software development processes & skills have earned us an
been ranked 167 among all I.T. companies in the first 250 of the
Technology Fast 500; and our ability to meet customer commitments

ISO 9001:2000 certification. We have
Deloitte Touche Tohmatsu Asia Pacific
.



The company has a formidable client list of more than **1000 large and medium size** corporate houses including MNCs and has to its credit over **900 installation** of our flagship ERP Businesssoft and Businesspro. The company has a comprehensive industry-wise client list with its software being used successfully in almost all the industries, such as chemical, automobile, sugar, pharmaceutical, communication or consumer durables etc.

Some of our clients for Businesssoft & Businesspro are: British Telecom (Worldwide), Honda Sael Cars India Ltd.(HSCI), Kalyani Brakes (Robert Bosch group), Tata Honeywell Limited, JCT Limited, Rico Auto Ind. Ltd, Galaxy Surfactants, K.M. Sugar Mills Ltd., Allergan India Limited, Verifone Software Systems Limited, Bombay Oil Industries, National Panasonic Limited, Indian Technological Products Ltd. (ITPL), Landmark Group of Companies - ALJ Group (Saudi Arabia) etc.



VISESH INFOTECNICS LTD.

(AN ISO9001:2000 Company)

Explore a new world of ERPossibilities

REGISTERED OFFICE : 508, Arunachal Building 19 Barakhamba Connaught Place, New Delhi 110001 India.

Tel# +91 - 11 - 47613300 Fax#+91 - 11 - 47613399. e-mail: delhi@viseshinfo.com

REGIONAL OFFICE: S-209, South Block,Manipal Centre,Dickenson Road, **Bangalore** 560 042 India.
Tel: +91-80-56984747/48, Fax: +91-80-527 4426.

e-mail: bangalore@viseshinfo.com

REGIONAL OFFICE 3085, Oberoi Tower Estate, Chandivli, Andheri (E), **Mumbai** 400 072, India .

e-mail: mumbai@viseshinfo.com

OVERSEAS OFFICE: 8/5, Sukhumvit 28 Klongton, Klongtoey **Bangkok** 10110, Thailand.

Tel: (662) 261-6321 to 24, Fax: (662) 261-6325. e-mail: bangkok@viseshinfo.com

Visit us at : www.powERP.ro.co.in